

dukta® flexible wood

INSTALLATION METHOD

For dukta® panels we offer installation materials for straight and wavy panels
Wooden birch plywood bars (Multiple = X) in form of flat arc constructions or of two different radiuses

Bars in straight forms can be used as finishing of ceiling or as side stops



Accessories for dukta® JANUS products – as standalone elements:



dukta® panel thickness 25 – 27 mm

	designation	size	type	external radius	internal radius
	DU.AL05	23 x 32 mm	flat sheet	-	-
	DU.AB05-603	23 x 32 mm	arc	603 mm	571 mm
	DU.AB05-303	23 x 32 mm	arc	303 mm	271 mm
	DU.AL07	23 x 42 mm	flat sheet	-	-
	DU.AB07-610	23 x 42 mm	arc	610 mm	568 mm
	DU.AB07-310	23 x 42 mm	arc	310 mm	268 mm

Straight bar 2450 mm (±20 mm)



During shaping of panels AL0.5 and AB0.5, Janus panel must be engraved



DU.AB05



Using shapes AL03 (straight edge) end AB03 (arc) and additional solutions for floors and ceilings with side finishing AL03.

dukta[®] flexible wood

Installation accessories for products dukta[®] LINAR, SONAR and FOLI: for wall covering of one-side or two-side dukta[®] planks - Linari, Sonar and Foli type – we suggest a metal bar (DU.ML40). The bar is attached to wall with screws or a shaped carrier, and a dukta[®] panel attached to it. Metal bar can be easily cut with scissors. Wooden bars made of birch plywood may be in flat construction as well as in an arc of 2 different radiuses. DU.ML07 bars (spruce with no PA) can be used for installation on wall or in connection with DU.AB 03 as a stationary connecting element.



dukta[®] - panel thickness: 8 - 9 mm

	designation	size	type	external radius	internal radius
	DU.AL01	23 x 66 mm	flat sheet	-	-
	DU.AB01-707	23 x 66 mm	arc	707 mm	641 mm
	DU.AB01-357	23 x 66 mm	arc	357 mm	291 mm
	DU.AL03	23 x 58 mm	flat sheet	-	-
	DU.AB03-700	23 x 58 mm	arc	700 mm	642 mm
	DU.AB03-350	23 x 58 mm	arc	350 mm	292 mm
	DU.ML07	40 x 20 mm	even bar	-	-

listwa montażowa metalowa

	DU.ML40	40 x 0,8 mm	even bar 1250 mm	formability	-
--	---------	-------------	------------------	-------------	---

even bar: 2450 mm (±20 mm), DU.ML40: 1250 mm

DU.AB01



framed look

DU.AB03



look without frame

Both versions are examples of use for internal and external arcs – or two-sided



dukta[®] flexible wood

Example of installation

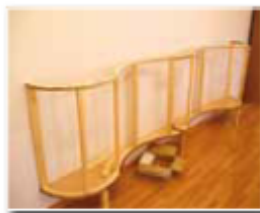
fk DŘEVĚNÉ LIŠTY Víc(ℓ) masivního dřeva

Example of installation

Dukta[®] panels are suitable for use on walls, in corners and on ceilings – straight or curved



proposition



constructions



filling



ML40 metal bar



suspension

Accessories

For dukta[®] panels we offer hooks which can be creatively used in shops and sale points.

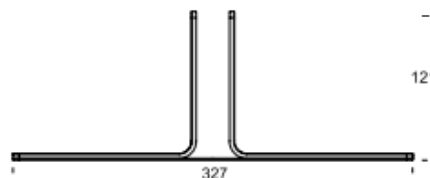
Uses of dukta[®] panels of 8 mm thickness with LINAR and SONAR milling



product	material	size	unit size
DU hook	compact disc	42x35x4 mm	1 set 5 pieces



For dukta[®] JANUS panels as a standalone element we offer stainless steel alloys



product	material	size	Unit
DU noga metalowa	nierdzweka	327x60x121 mm	1 szt

fk DŘEVĚNÉ LIŠTY Víc(ℓ) masivního dřeva

www.acoustic4you.com

office@acoustic4you.com

dukta[®] flexible wood

Installation materials

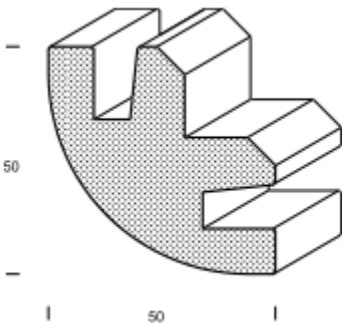
Dukta[®] installation connections – both corner and flat

With a proper groove for dukta[®] FOLI , LINAR, SONAR, (8 mm or 9 mm)

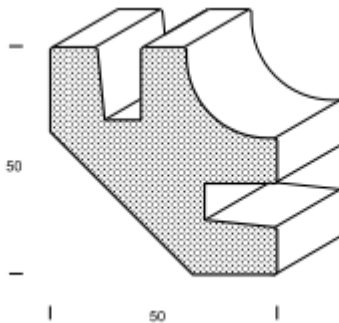
- wood: cut boiled beech
- Length: 2500 mm (tolerance -0 / + 50 mm)



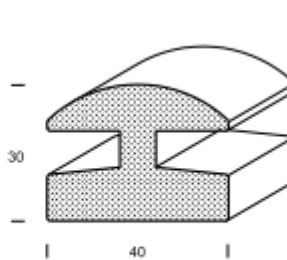
DU.ELR5050



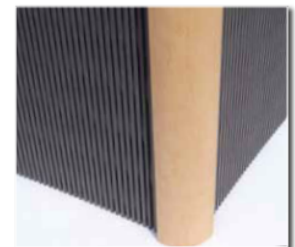
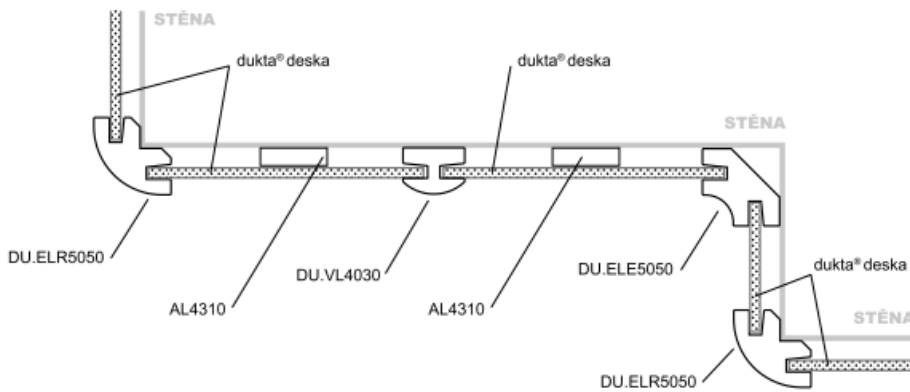
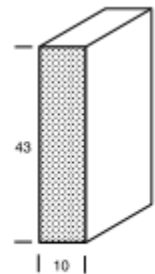
DU.ELE5050



DU.VL4030



AL4310



external carrier



internal carrier

product	description	size	unit
DU.ELR5050	external corner bar	50 x 50 mm	1 piece
DU.ELE5050	internal corner bar	50 x 50 mm	1 piece
DU.VL4030	surface-connecting rail	40 x 30 mm	1 piece